



44 Marlesford Crescent Berwick VIC

4 2 4

Discover the perfect blend of tranquility and convenience at 44 Marlesford Crescent, nestled in the leafy suburb of Berwick. This beautifully maintained solid-brick family home, set on an approximately 600m² allotment, offers a serene escape without compromising on proximity to essential amenities.

Lovingly built by its original owners, this family home boasts four spacious bedrooms, plus a study (optional 5th bedroom), including a master suite with a walk-in robe and private ensuite. The remaining three bedrooms are serviced by a central bathroom.

The heart of the home is the expansive open-plan kitchen,

[For full version visit the website](https://www.murnane.com.au/sale/vic/south-east/berwick/residential/house/8231352)

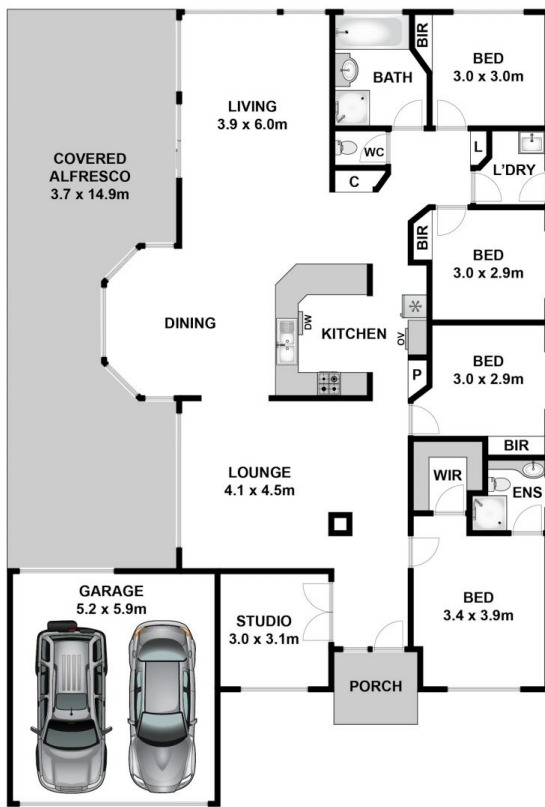
Type : House
Land Size : 600 sqm
View : <https://www.murnane.com.au/sale/vic/south-east/berwick/residential/house/8231352>



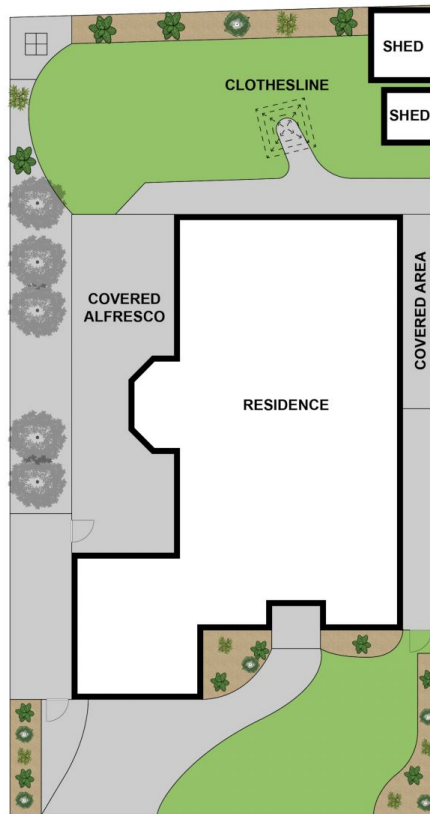
Olivia Mulvany
1800 473 250



Brian Terry
1800 473 250



GROUND FLOOR



SITE PLAN



Approx House Area 206m²
 Approx Land Area 599m²

Whilst bwrn.com.au has made every attempt to ensure the accuracy of the floor plan contained here, measurements are approximate and no responsibility is taken for any error, omission, or mis-statement. This plan is for illustrative purposes only.

44 Marlesford Crescent, Berwick