



1 Parkstone Vista Cranbourne VIC

3  2  1 

No. 1 Parkstone Vista is a federation-style home with 3-bedrooms, 2-living spaces, 2-bathrooms, offering a convenient new address for its next owners.

Set on a corner block (470 sqm. approx.) it provides both the space and potential to turn its new owner's aspirations into reality.

A good-sized living and dining space neighbours a well-thought-out kitchen with an abundance of storage and cabinetry. Kitchen features include a gas hob, electric oven and dishwasher, pantry and breakfast bar island.

There is a three-bedroom accommodation, perfect for

[For full version visit the website](https://www.murnane.com.au)

Type : House

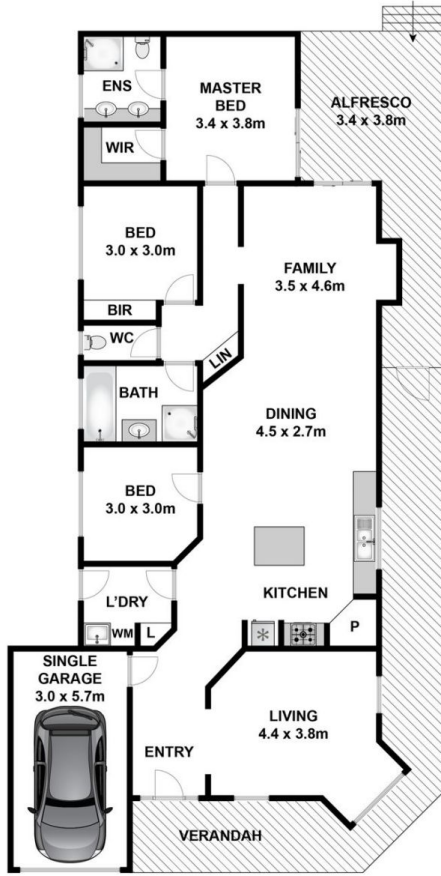
View : <https://www.murnane.com.au/sale/vic/south-east/cranbourne/residential/house/8143317>



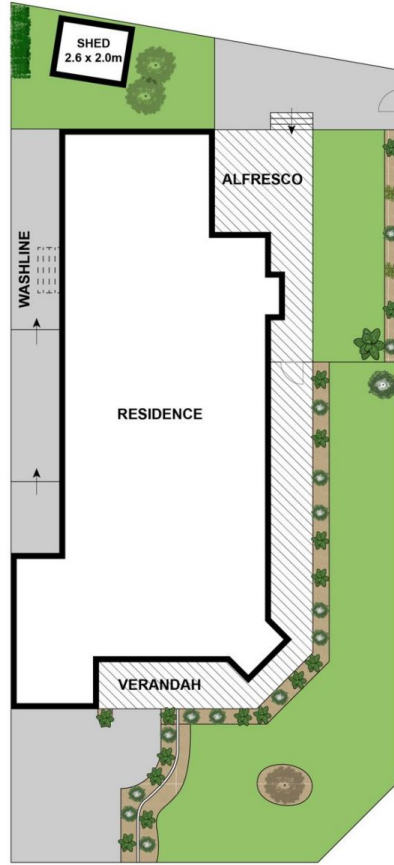
Brian Terry
1800 473 250



William Murnane
1800 473 250



GROUND FLOOR



SITE PLAN

Approx House Area 166m²
 Approx Land Area 450m²

Whilst bwrn.com.au has made every attempt to ensure the accuracy of the floor plan contained here, measurements are approximate and no responsibility is taken for any error, omission, or mis-statement. This plan is for illustrative purposes only.

1 Parkstone Vista, Cranbourne